

Jan2013 | RMB:60.00

www.e-jjj.com

# 中国建筑装饰装修 INTERIOR ARCHITECTURE OF CHINA

主管：中华人民共和国住房和城乡建设部  
主办：中国建筑装饰协会

ISSN 1672-2167



2013年第1期/总第121期

邮发代号：82-698

封面图片：VILLA SOLAIRE

设计：JKA + FUGA事务所

摄影：Jérôme Aich





## 农舍改建的出租别墅——VILLA SOLAIRE

### VILLA SOLAIRE

事务所：JKA + FUGA 事务所  
 设计团队：JKA - Jérémie Koempgen Architecture  
 FUGA - J.Aich & M.Recordon designers  
 J.Koempgen and J.Aich are members of the collective Ferpect  
 总建筑面积：620 平方米  
 完成时间：2012 年 1 月  
 摄影：Jérôme Aich  
 Architects : JKA + FUGA  
 Design Team: JKA - Jérémie Koempgen Architecture  
 FUGA - J.Aich & M.Recordon designers  
 J.Koempgen and J.Aich are members of the collective Ferpect  
 Gross Floor Area : 620 sq.m.  
 Completion: January 2012  
 Photograph: Jérôme Aich



项目是将一个古老的农舍改建成为豪华出租别墅，重新审视了传统技术。农舍始建于1826年，坐落于Morzine历史悠久的Pied de La Plagne地区，是一座具有典型传统风格的地标性建筑，因而被挑选出来重新翻修。

#### 内部/外部装修

建筑外围由一个统一的栅栏层包裹。项目的一大挑战是对原有建筑外观的保护，同时让光线能够通过栅栏间的缝隙照入建筑内部。当地工匠采用传统工艺对特制的穿孔木板进行切割，实现了这一简洁、现代的设计。

阳光透过这些木条的缝隙照射进来，使建筑内部变得敞亮。设计的一个亮点在于建筑表面的图案在云杉木的包裹下形成流动的阴影变化。

一年之中，周围建筑物的屋顶在建筑表皮不断投下阴影。这样的设计是为了使阴影

在建筑表皮所形成的流动的明暗变化清晰可见。内部的开放空间吸收大量的阳光，实现了建筑内外部的连续性，并成为一个人颇具易读性的公共空间。在这一概念下，

人们的生活方式与周围环境和谐相融，房屋的四个立面能够精准地反映出太阳的运动轨迹，如同日晷一般，因此得名“太阳之屋”。





**地域化的生活方式**

房屋四角安然牢固，每个独立单元都由睡眠区和完备的配套设施组成。房屋的四角被不同层级的楼梯包围着。连续宽大的空间是居民活动的便利场所，这里可以用餐、看电影，围着火炉交谈等等…

**结构解析**

嵌套的层次或“复杂的蜗居”

改建后，原农舍的结构没有改变。保护旧建筑的整体外观是项目最关键的挑战之一，基于此项目最大程度地恢复建筑原貌：原来的墙壁经过粉刷和修饰后得到了保护。

**压缩空间，扩展空间**

为了在清理房间的同时也能满足房源需求，设计将实用功能紧密结合起来。舒适的卧室、浴室和睡凳在尺度上形成强烈的对比，旁边是空间开放的会议中心。这些嵌套式的复杂的空间是综合细节和材料上的考量而设计的。







The project consists in a conversion of an ancient farmhouse into a luxury rental villa, revisiting traditional techniques. This former farmhouse is located in the historic district of Pied de La Plagne, in Morzine. Built in 1826, it was singled out by the municipality as

a landmark for traditional architecture.

#### **Inside/outside fitting**

A uniform cladding wraps the whole farm. One of the challenges of the project was to preserve its appearance, while filtering light into the heart of the building. The traditional technique of

decorative cut-outs within the wood strips was used to perform specific perforations within the planks. The design of this simple and contemporary pattern is consistent with the equipment and techniques used by the local carpenter for cutting spruce slats.

Today, these slits bring light inside the building. The glazed elements of the project, which are flush with the inside of the façade, are partially hidden by the cover strips. As they are not visible from outside they do not interfere with the uniformity of the cladding.

Throughout the year, the surrounding roofs and buildings cast their shadows on the façades. The pattern within the cladding is designed to respond to the path described by these shadows: the areas receiving a greater amount of sun are all the more open and provide a certain legibility of the continuity between the common spaces of the house.



This concept of interlocking inside/outside, evokes a lifestyle in harmony with its surroundings and leads to the project being named the "solar house": a house exposed on its four façades to the path of the sun, perceived as a sundial.

#### A living geography

The idea is to move through this house between four "blocks" steady as rocks, located at each corner of the building. Each independent unit forms a suite with sleeping area and amenities.

Between these four blocks, the remaining space is occupied by a

succession of stacked floors at different levels in the framework. This continuum of generous space welcomes the activities shared by the inhabitants: cooking, dining, watching a film, conversing in the living room, warming up around the fire...

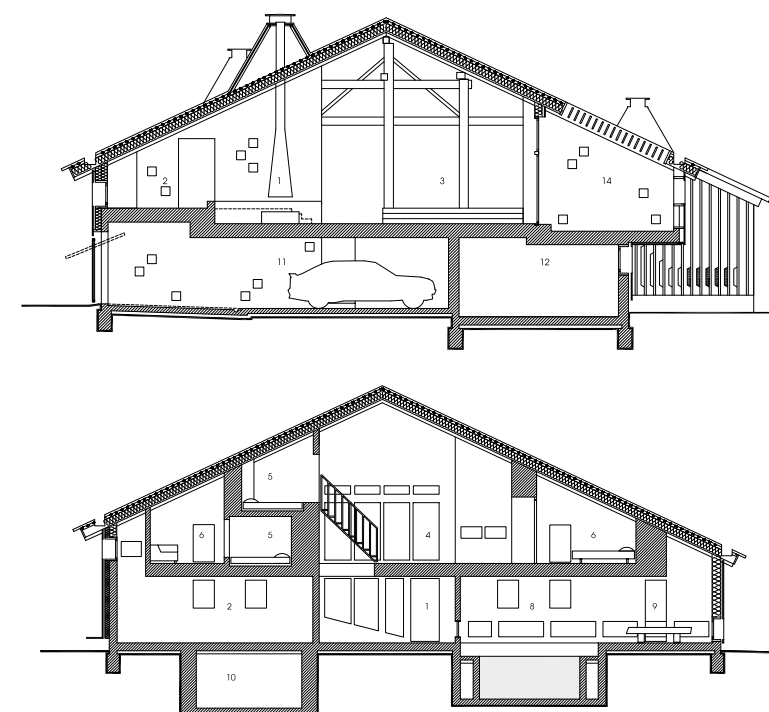
#### Revealing the structure

Nested scales or "the complex of the snail" The charm of the original farm resides in the existing structure. Conserving its overall appearance was one of the project's key challenges, which motivated its restoration: It was fully recovered and

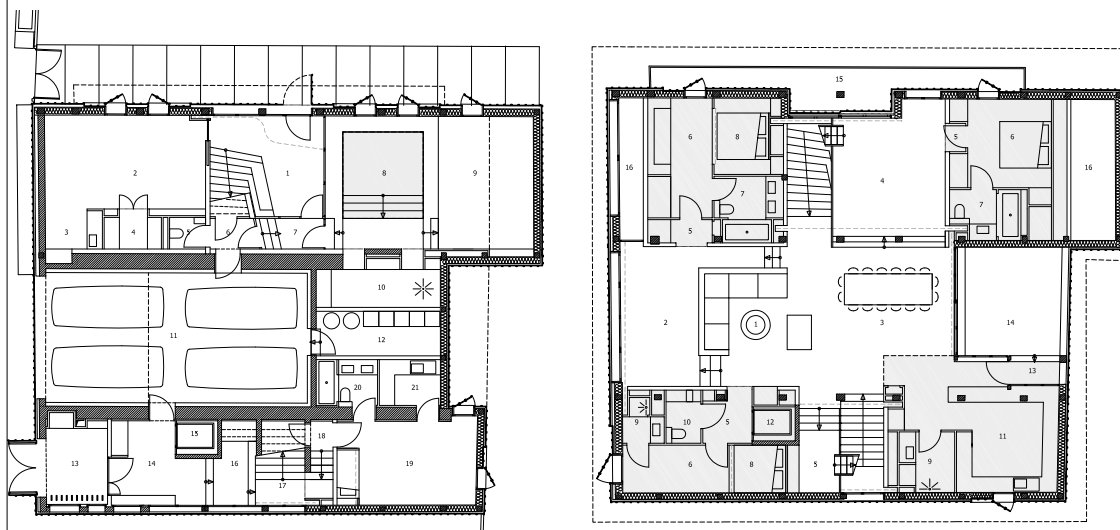
the original plastering preserved after brushing and trimming.

Compressed spaces, expanded spaces In order to clear the room of the nave while meeting the rental house needs, utility functions were closely integrated. A strong contrast results from the scales of the cosy bedrooms, bathrooms and sleeping alcoves, next to the open central meeting space. The complexity of these nested spaces is combined with a similar research in terms of details and materials.

(责任编辑: 高怡)







Jérémie Koempgen

事务所创始人

事务所致力于方案创新和工业产品的创新。项目主要涉及三个领域：模型设计，产品设计和平面设计。平面设计师 Magdalena Recordon 和产品设计师 Jérémie Koempgen 曾共同就读于法国国立高等工业设计学院